



**TECHNICAL DATASHEET**

*SCHEDA TECNICA*

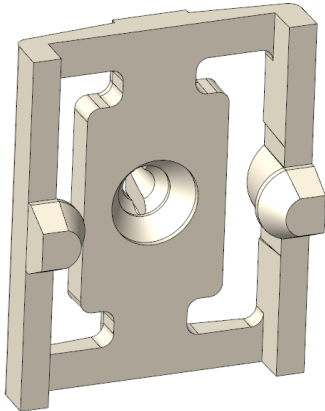
**Mod.:** C1350000

**FAMILY NAME:** C1350 Bracket

**Rev.:** 00

*FAMIGLIA:* C1350 Staff

**Data:** 10/02/2025



**WORKING CHARACTERISTICS**

Working pressure:	-
Room temperature:	MAX 80°C
Fluid temperature:	-
Flow direction:	-
Nominal diameter:	-
Elect.Pilot/Control:	-

**CARATTERISTICHE DI LAVORO**

Pressione di esercizio:	-
Temperatura ambiente:	MAX 80°C
Temperatura fluido:	-
Direzione fluido:	-
Diametro di passaggio:	-
Elet.Pilota/Comando:	-

**PHYSICAL CHARACTERISTICS**

Valve body:	PA66 - 30% GF
Diaphragm:	-
Core:	-
Spring:	-
Assembly:	Snap fit

**CARATTERISTICHE FISICHE**

Corpo valvola:	PA66 - 30% FV
Membrana:	-
Nucleo:	-
Molla:	-
Assemblaggio:	A scatto

**INSTALLATION**

Installation directly on the solenoid yoke via snap fit. The brackets can be assembled in any position without compromising the functioning.

**INSTALLAZIONE**

Installazione direttamente sul giogo della bobina tramite scatto. Le staffe possono essere assemblate in qualsiasi posizione senza comprometterne il funzionamento.

**APPLICATIONS**

TD series	TU series
TV series	V2/V3 series
R4 3/2 way	R2 3/2 way

**APPLICAZIONI**

Serie TD	Serie TU
Serie TV	Serie V2/V3
R4 3/2 way	R2 3/2 vie

**HYDRAULIC CONNECTIONS**

-	-
---	---

**CONNESSIONI IDRAULICHE**

-	-
---	---

**MARKS AND CERTIFICATIONS**

-
---

**MARCHI E CERTIFICAZIONI**

-
---



**TECHNICAL DATASHEET**

*SCHEDA TECNICA*

**Mod.:** C1350000

**FAMILY NAME:** C1350 Bracket

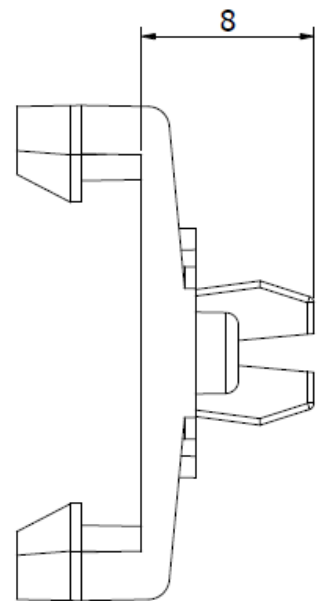
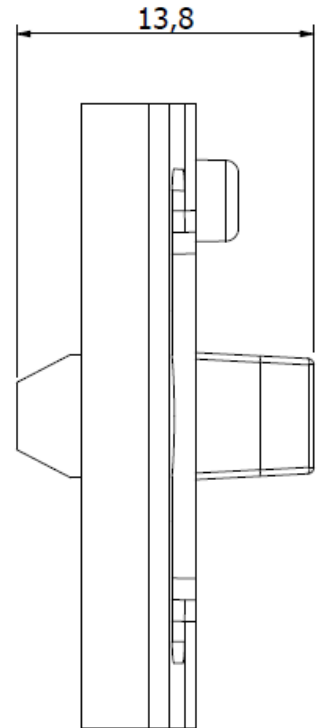
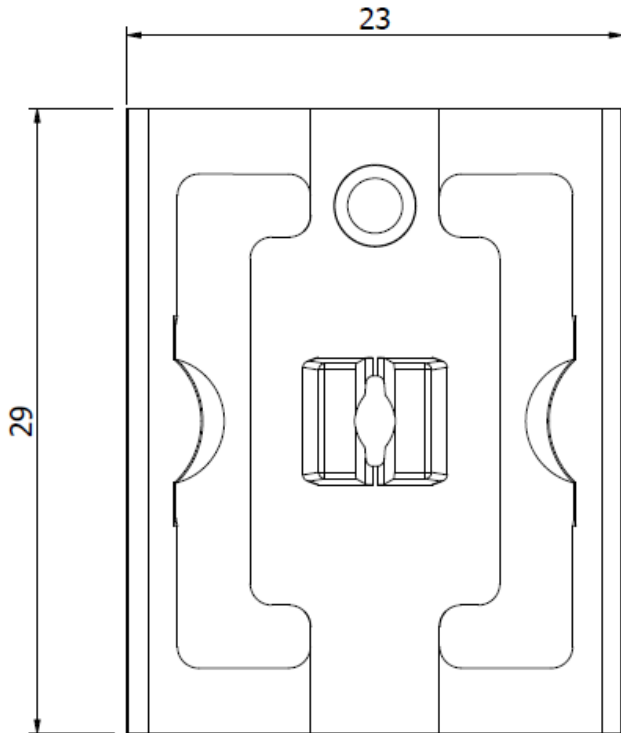
**Rev.:** 00

*FAMIGLIA:* C1350 Staffa

**Data:** 10/02/2025

**DIMENSIONAL DRAWING**

*DISEGNO DIMENSIONALE*





TECHNICAL DATASHEET

SCHEDA TECNICA

Mod.: C1350000

FAMILY NAME: C1350 Bracket

Rev.: 00

FAMIGLIA: C1350 Staffa

Data: 10/02/2025

SEAT IDEA

IDEA SEDE

