



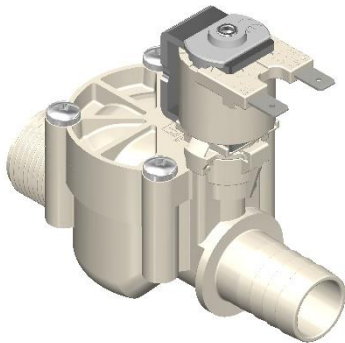
**RPE srl**  
elettrovalvole

**rpesrl.com**

☎ 0331 832515

✉ [customercare@rpesrl.it](mailto:customercare@rpesrl.it)

## **Fifth Series Valve**



The Fifth Series is a 2-Way Solenoid Valve developed for **Medical, Laboratory & Dental Equipment; including Professional Sterilization Machines, Bedpan Washers and Disinfecting Equipment.** This valve is also utilized in **Commercial Ice Machines, Professional Laundry Equipment and in Industrial & Agricultural water treatment applications.**

The Fifth Series Valve has been designed to withstand highly corrosive chemical and cleaning substances at low and high temperatures, providing 350 l/min (92.5 gal/min) of water flow with an operating pressure of up to 10 bar (145 psi).

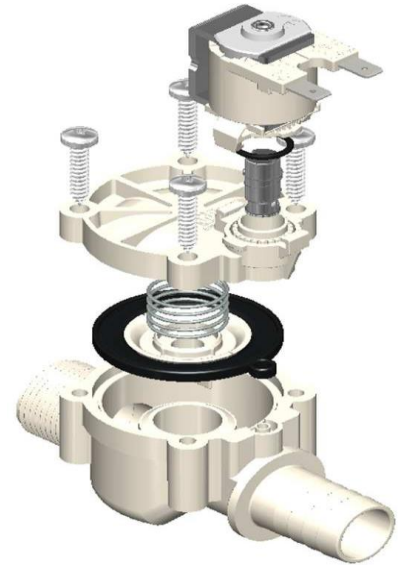
### **Features and Benefits**

- The Fifth Series valve provides a small and lightweight solution for today's portable medical devices that by their nature have a compact design allowing them to be used as movable and bedside medical equipment.
- Reliable technology – Due to the safety critical nature of the medical device industry high levels of reliability and repeatability are required. This is something RPE excels with.
- Encapsulated coil provides high mechanical and dielectric strength and moisture resistant.
- Body is made of PA 66 – 30% FG and Diaphragm of durable EPDM with a chemical resistant construction to withstand a variety of harsh water conditions.
- Suitable for applications using water at temperatures up to 90°C (194°F)
- Low noise operation – Some medical applications, such as patient monitors require minimal noise to increase patient comfort.
- Low energy consumption – Solenoid valves are extremely energy efficiency. They are designed to reduce energy consumption.



## **Characteristics**

Valve Body Material: PA 66 – 30% FG  
Diaphragm Material: EPDM  
Core: Stainless Steel  
Assembly: Self-Tapping Screws  
Insulation Class: Class F 155° C (311° F)  
Coil Terminals: Faston Male connections (6.3 x 0.8 mm)  
Flow direction: Unidirectional  
Hydraulic Options:  
Inlet: 3/4" Male Thread BSPP (G)  
Outlet: 3/4" Male Thread BSPP (G) 21.5 mm Hose Tail (Barbed) fitting



## **Operating Specifications**

Coil Voltages: 24VDC, 12VDC, 24VAC, 12VAC, 110VAC & 230VAC.  
Control: Normally Close  
Orifice Nominal Diameter: Ø17 mm  
Working pressure: 0.2 to 10°Bar (2.9 to 145 psi)  
Flow Range: 0 to 350 l/min (0 to 92.5 gal/min)  
Room temperature: 0÷60° C (140° F)  
Fluid temperature: 0÷90° C (194 ° F)  
Flow direction: Unidirectional  
Installation: Valve can be placed in any position without affecting its operation or performance.



Solenoid Valves  
Pressure restrictors  
Flow meters & Filters

SINCE **1972**

[www.rpesrl.com](http://www.rpesrl.com) Nothing great has ever been done without passion